

# COOLMASTER

*Fitting Instructions*

Part № **49478KHD**



*Kit contains:*

- Extra Large High Flow Cooler with Fittings
- Powder Coated Steel Mounting Bracket
- 2 3m Braided Lines with Speedflow Fittings
- 500mm of Conduit
- 2 In-Case Fittings
- 8 300mm Cable Ties
- 200mm 3/8 Transmission Line
- 6 x Fixed Washer Bolts M6 x 16
- 5 x M6 Metric Nuts
- Instructions

## Quick mount for Isuzu D-MAX – MY21

1. Remove the radiator support cover, upper grille, and passenger-side upper air deflector, along with all stone guards and underbody covers from under the bonnet and beneath the vehicle. **(Pic 1 to 4)**

Pic 1



Pic 2



Pic 3



Pic 4



2. Remove the passenger side horn assembly. Remove the passenger side lower air deflector clip. Remove the passenger side lower radiator support bracket bolt. **(Pic 5 to 7)**

**Pic 5**



**Pic 6**

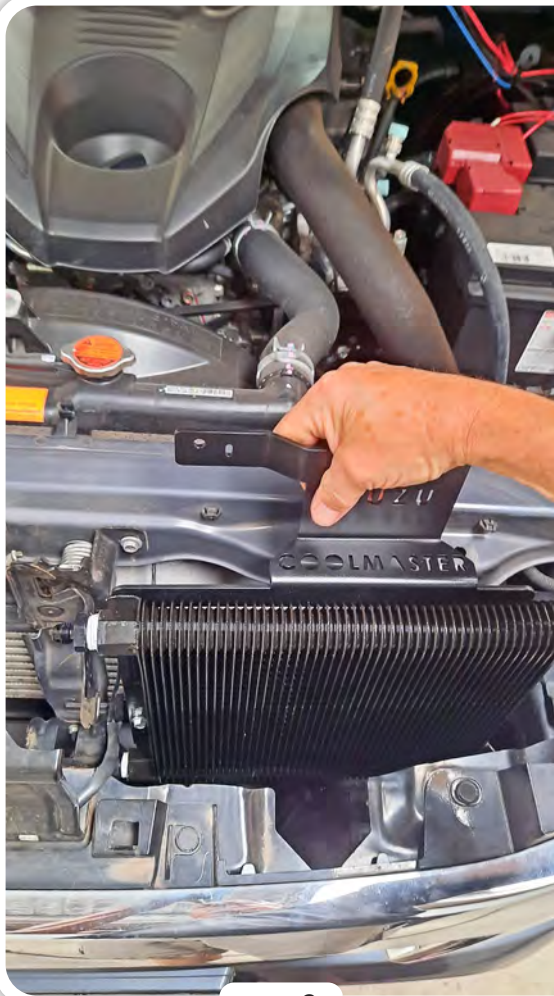


**Pic 7**

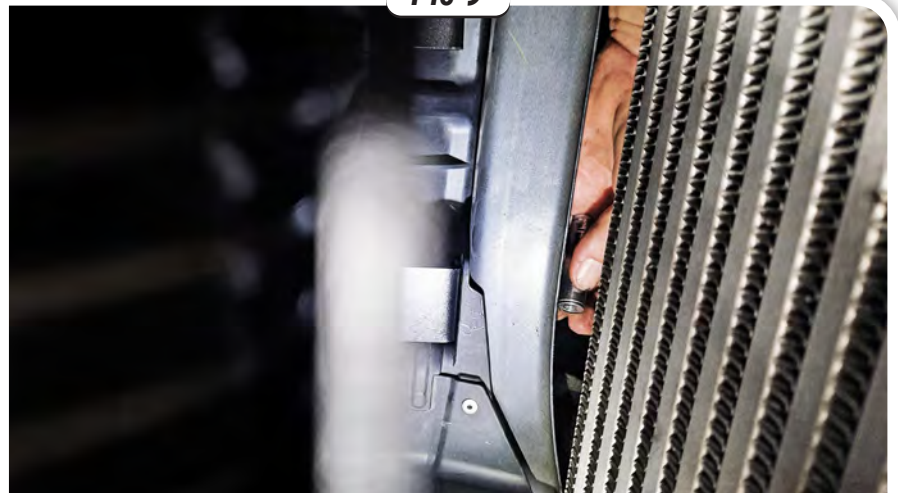




- 3.** Fit the cooler and bracket assembly by using the original horn bolt for the top mount and the original radiator support bolt for the center mount. For the lower passenger side mount, secure it with the supplied nut on the existing stud. Once all bolts and the nut are in place, tighten them securely. Finally, refit the horn to the bracket using the supplied nut and bolt. **(Pic 8 to 10)**



**Pic 8**



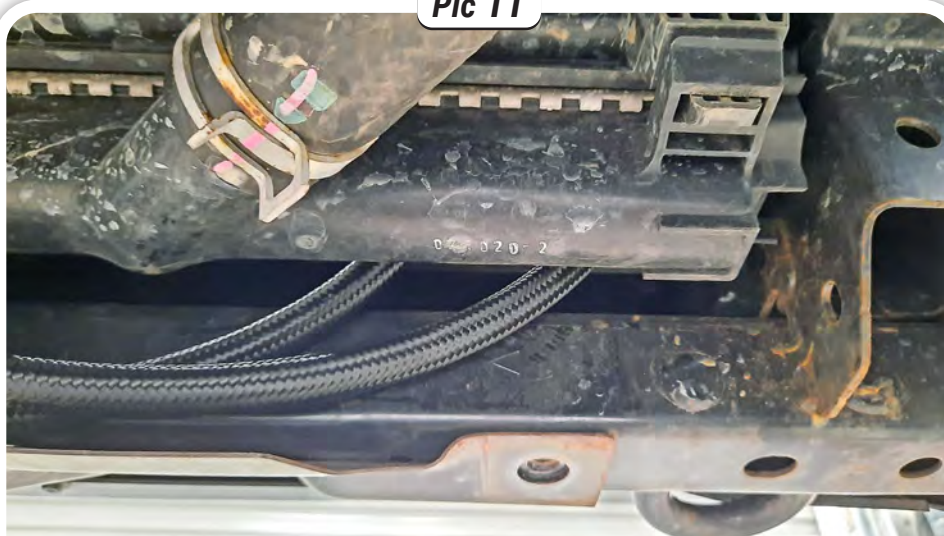
**Pic 9**



**Pic 10**

4. Feed the straight ends of the braided lines up from underneath at the right-hand side of the bottom radiator tank. Loosely attach the lines to the cooler. Then run the braided lines to the passenger side of the engine going over the top of the sway bar and running next to the passenger side engine mount. Leave it here until ready to attach to the transmission. (Pic 11 to 13)

Pic 11



Pic 12



Pic 13



5. Remove both the cooling lines from the heat exchanger. Loop the supplied 3/8 hose and use the old claps to secure it. Remove both cooling lines from the transmission case. Remove all support brackets for the cooling lines and completely remove them from the vehicle. Remove the barb-type fittings from the transmission case. Fit the supplied 6 AN fittings to the case. **(Pic 14 to 19)**

**Pic 14**



**Pic 15**



**Pic 16**



**Pic 17**



**Pic 18**



**Pic 19**





6. Feed the 90-degree ends of the braided hoses between the heat exchanger and bell housing. Position around to the new case fittings and tighten loosely. Using one of the original brackets from the cooling lines secure the braided lines to the base of the bell housing. Make sure to bend the bracket accordingly to not crush or crimp the braided line. Tighten the braided lines to the case fittings. Use the supplied cable ties to secure the braided lines as required in the engine bay. (Pic 20 to 25)

Pic 20



Pic 21



Pic 22



Pic 23



Pic 24



Pic 25





7. Tighten the braided lines to the fittings on the cooler. Use the supplied conduit to put around the braided lines where rubbing may occur in the front of the vehicle. Fit and mark the passenger side air deflector where a relief slot will need to be cut. The rearward tab will also need to be removed for ease of fitment. **(Pic 16 to 30)**

**Pic 26**



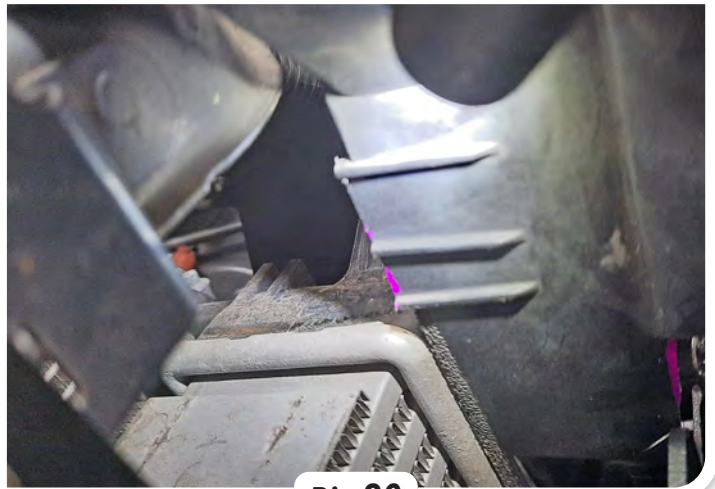
**Pic 27**



**Pic 28**



**Pic 29**



**Pic 30**

8. Now start the engine and carry out a check for leaks at all locations. Carry out fluid checks and top-ups as required. Refer to manufacturer specifications for this process. Once done and no leaks are found refit all the upper grille, covers, and splash guards under the bonnet and the vehicle.