

COOLMASTER

Fitting Instructions

Part № **49473K**



Kit contains:

- Cross Flow Oil Cooler & Bracket
- 4 x 8-16mm Stainless Steel Clamps
- 2.5m x 10mm Hose with Conduit
- 5 x Cable Ties
- Plastic Clip for Air Conditioning Line
- Instructions

1. Ensure the car is fully switched off. It is recommended that the vehicle is cold prior to installation.
2. Open bonnet.
3. Remove the front grill by removing the (2) retaining clips and the (2) 10mm head bolts. **(Pic 1 & 2)**



Pic 1

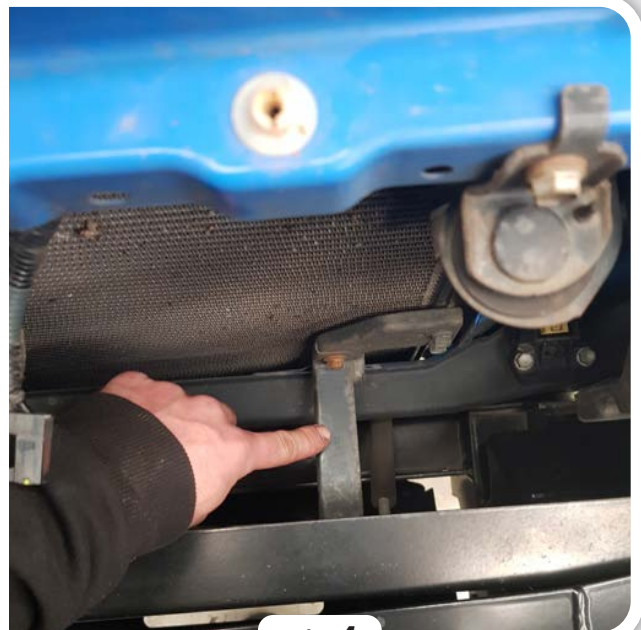


Pic 2

4. Remove the horn located on the passenger side of the top radiator support panel. Keep the bolt as you will use this in a later step. **(Pic 3)**



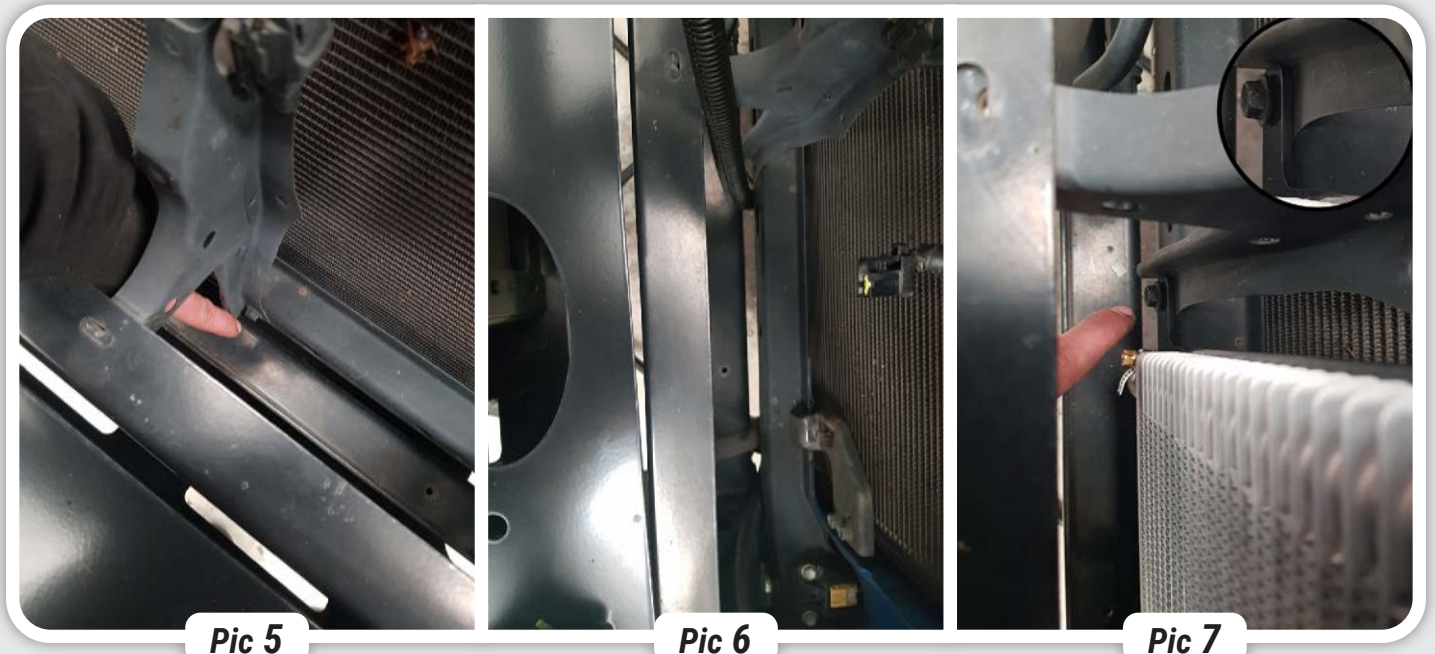
Pic 3



Pic 4

5. Unbolt and remove the bracket holding the air conditioning line. **(Pic 4)**

6. Remove the 10mm head bolt holding the radiator center support panel. **(Pic 5)**
7. Remove the (2) silicone covers on the unions on the bottom of the supplied cooler.
8. Cut the supplied hose in half.
9. Connect one hose to each of the unions on the bottom of the supplied cooler.



10. Clamp the hose to the supplied cooler using the supplied hose clamps.
11. To fit the supplied cooler to the vehicle, feed the (2) pieces of supplied hose down in front of the lower radiator support panel (refer photo below). **(Pic 6)**
12. Lower the supplied cooler bracket into place and bolt (use factory bolt removed earlier) the cooler bracket to the vehicle using the (2) bolt holes on the bottom of the cooler bracket. See photo below for positioning of bracket and the location of the bolt on the left side. Loosely bolt the bracket to the vehicle using the left bottom bolt hole. **(Pic 7)**

- 13.** Install the plastic clip in the square hole of the angle bracket supplied with your cooler bracket. Bolt (use factory bolt removed earlier) the angle bracket and cooler bracket together to the vehicle via the bottom right hand bolt hole in the cooler bracket. Clip in air conditioning line. **(Pic 8 & 9)**



Pic 8



Pic 9

- 14.** Slightly bend the horn bracket as per the photo below. **(Pic 10)**



Pic 10



Pic 11

- 15.** Bolt the supplied cooler bracket's top bolt hole and the horn (flipped to face the reverse direction) to the original horn mounting hole. **(Pic 11)**

NOTE: IN THE ABOVE PHOTO THE HORN IS HIDDEN BEHIND THE SUPPLIED COOLER BRACKET.

16. Tighten the bolts holding the supplied cooler bracket to the vehicle.
17. Check all bolts /clamps you have tightened earlier are fully tight.
18. Reinstall the grill by reversing the removal procedure. **(Pic 12)**



Pic 12



Pic 13

19. Remove the front lower splash cover. To complete this you will need to access the underneath of the vehicle. **(Pic 13)**

- 20.** The supplied cooler hoses that were fed down earlier should be visible. **(Pic 14)**



Pic 14



Pic 15

- 21.** Locate the top factory steel pipe running from the transmission and follow it toward the front until you get to a rubber hose. **(Pic 15)**
- 22.** Remove the factory rubber hose from the line you have followed from the transmission. Refer below photo. **(Pic 16 & 17)**

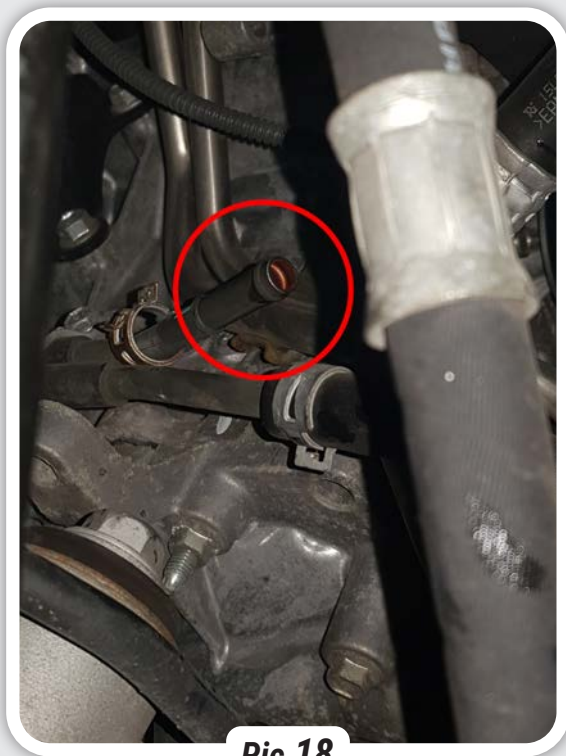


Pic 16



Pic 17

- 23.** Route the two supplied cooler hoses (attached to the bottom of the supplied cooler) to the two factory steel pipes exposed when you removed the factory rubber hose. **(Pic 18)**

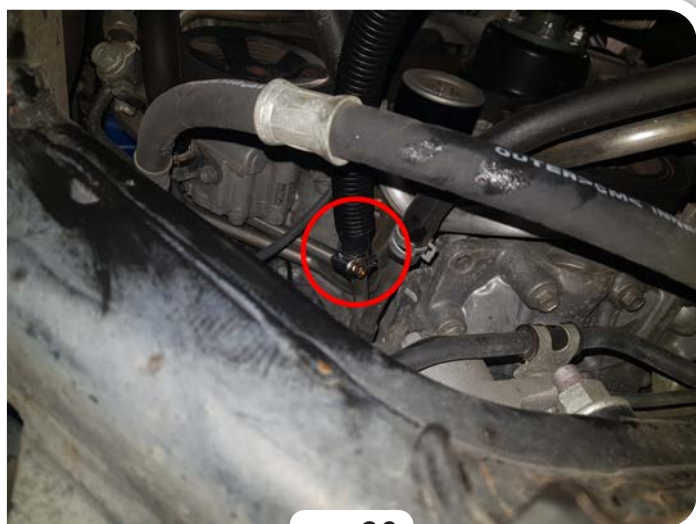


Pic 18

Cut the supplied cooler hoses to length, attach them to the factory steel pipes (it does not matter which hose is attached to which pipe as the cooler is unidirectional) and clamp with the (2) supplied hose clamps. **(Pic 19 & 20)**



Pic 19



Pic 20

24. Secure the new hoses using the supplied (5) cable ties so that they are routed away from moving parts.
25. Reinstall the lower splash tray by reversing the removal steps.
26. Top up the transmission by removing the fill plug on the rear of the transmission (drivers side). Refer to photo below. **(Pic 21)**
27. Start the car in park.



28. Remove the 5mm Allen key headed check bolt in the transmission pan (be sure not to lose the alloy sealing washer). **(Pic 22)**
29. Using a small hose through the fill plug hole, pump oil into the transmission until it begins to come out of the check hole.
30. Once the oil stops flowing out of the hole the oil level is correct, with the engine still running reinstall the check plug. **(Pic 23)**
31. Reinstall the fill plug and switch the car off.
32. Clean up all oil residue and take the car for a test drive.
33. On completion of the test drive visually check for any leaks.
34. With the engine still running, recheck transmission fluid is full. Top up levels as per previous instructions.
35. Check again for any transmission fluid on the vehicle and clean off.
36. Road test vehicle then re-inspect cooler and fittings for leaks. Tighten if necessary.