

# COOLMASTER

## Fitting Instructions

Part Nº **49471K**



### Kit contains:

- Extra Large High Flow Cooler
- Powder Coated Steel Bracket
- 2.5 meters Cooler Hose
- 2 meters Conduit
- 3 Fixed Washer Bolts M6 x 20
- 2 x Cable Ties
- 6 Cooler Hose Clamps
- 2 Hose Connection Barb Fittings
- 2 Nuts M6 Hex
- 3/8 steel U pipe
- Instructions

1. Remove the top radiator support panel cover by removing the (8) x 10mm headed bolts and the (8) x Torx screws. **(Pic 1)**



**Pic 1**

2. Remove the passenger side grill cover panel brace. Refit the M6 bolt back into the support panel. **(Pic 2)**



**Pic 2**

3. Remove the horn mounted to the top of the radiator support panel located on the passenger side of the vehicle, remove the attaching nut, turn the horn around on the bracket and remount so the horn faces the radiator. **(Pic 3)**

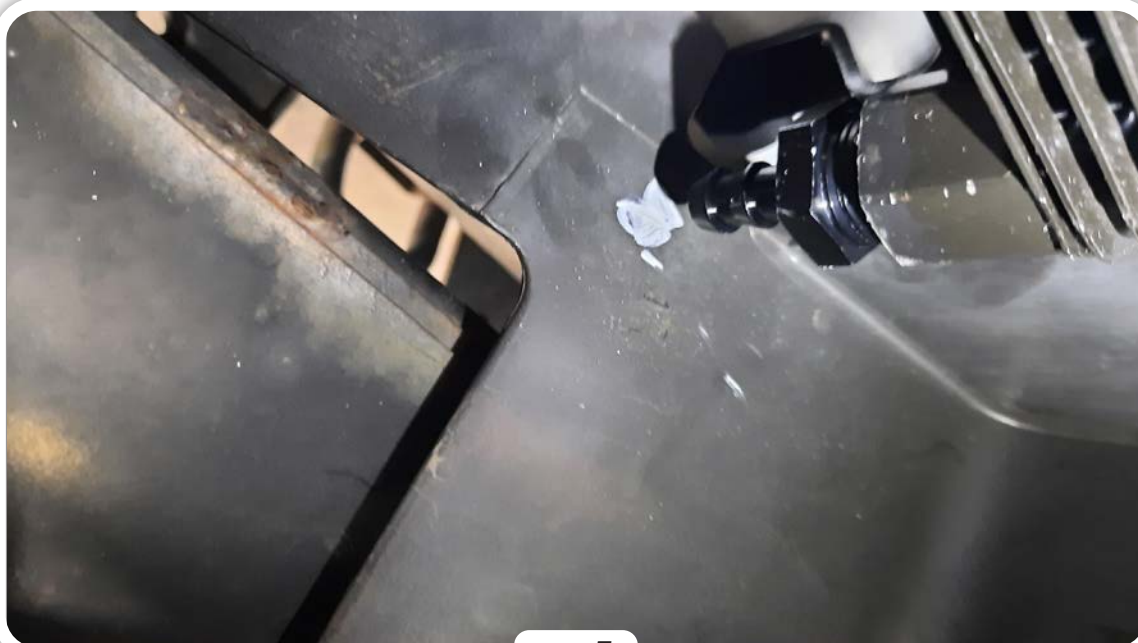


**Pic 3**



**Pic 4**

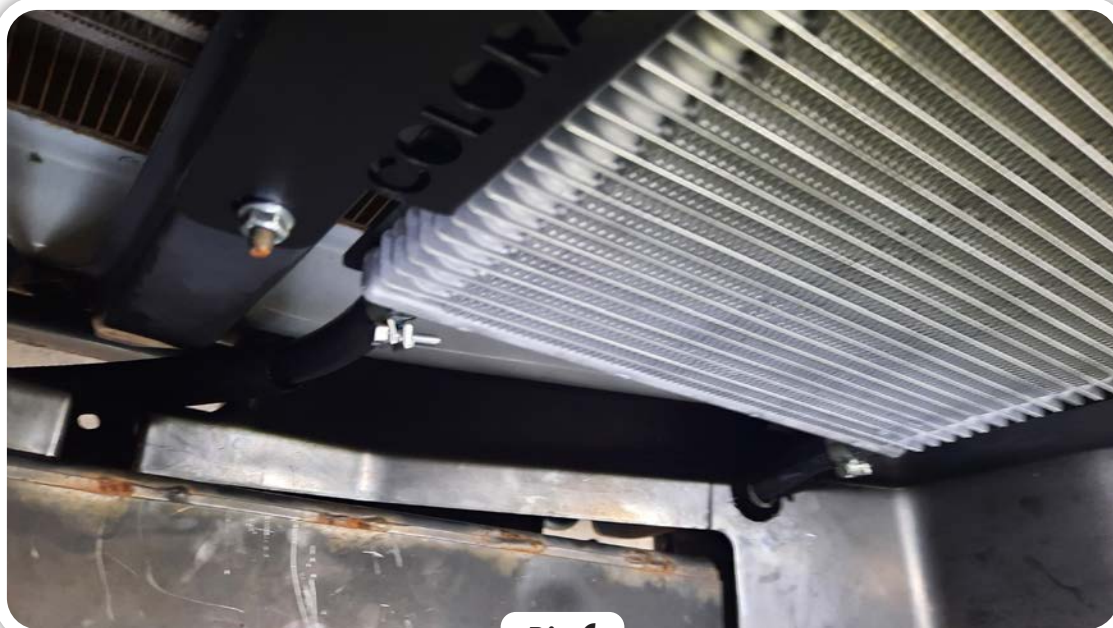
4. Raise the vehicle on a hoist, and remove steel or plastic undertray. **(Pic 4)**
5. Trial fit the bracket and cooler assembly. Mark where to drill the 30mm hole with a hole saw, or cut out a plastic air deflector with the appropriate tool, to allow cooler hose to go through. **(Pic 5)**



**Pic 5**

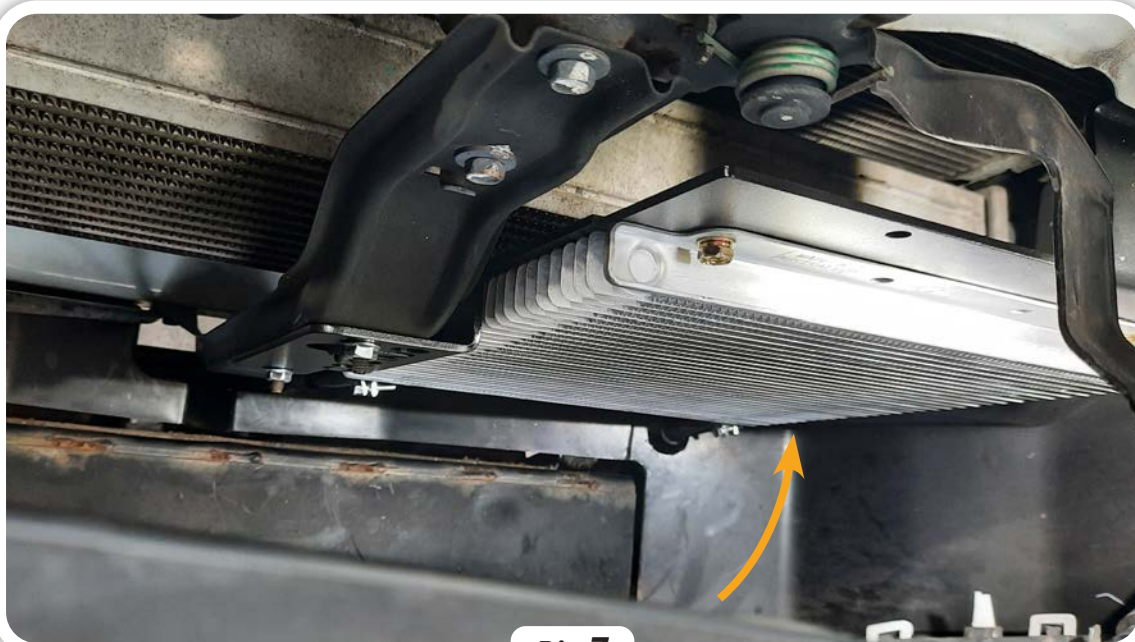


6. Cut the supplied cooler hose in half. Fit both ends to the barb fittings on the transmission cooler and fit hose clamps. Fit the transmission cooler and lines to the vehicle feeding the left-side hose through the drilled hole and the right-side hose through the gap in the middle of the air deflectors, centre of the vehicle. **(Pic 6)**



**Pic 6**

7. Check that the locating tab is fitted correctly to the radiator support **(Pic 7)**. Fasten the 2 M6 nuts and the M6 bolt to secure the bracket assembly.

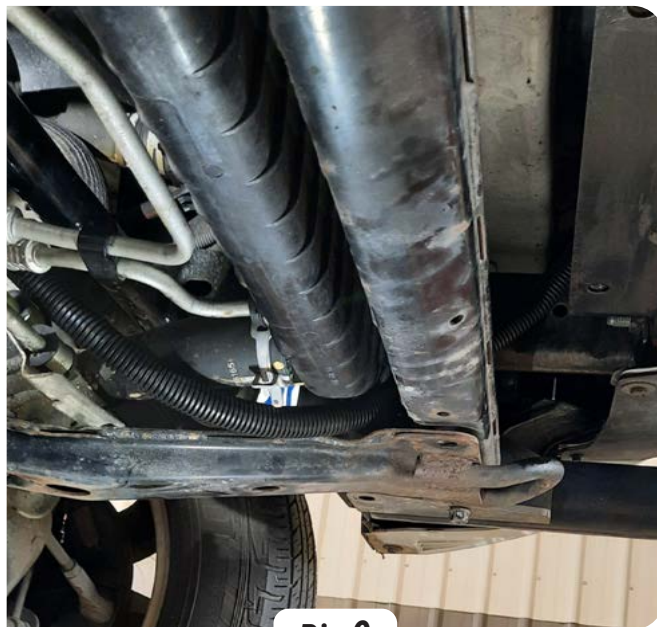


**Pic 7**

8. From under the vehicle, feed the left-hand cooler hose next to the bottom left corner of the radiator, feed the right-hand cooler hose across to the lower right-hand corner of the radiator, and position both hoses up towards the existing cooler lines. **(Pic 8 & 9)**

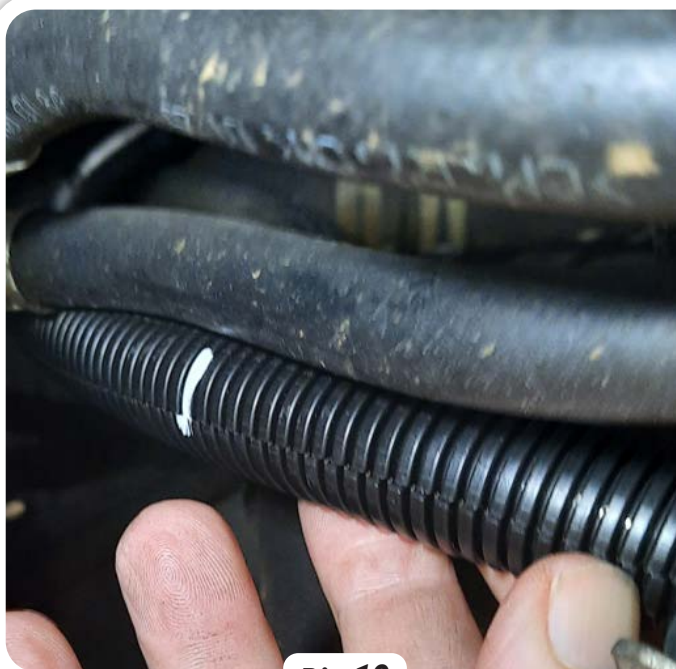


**Pic 8**

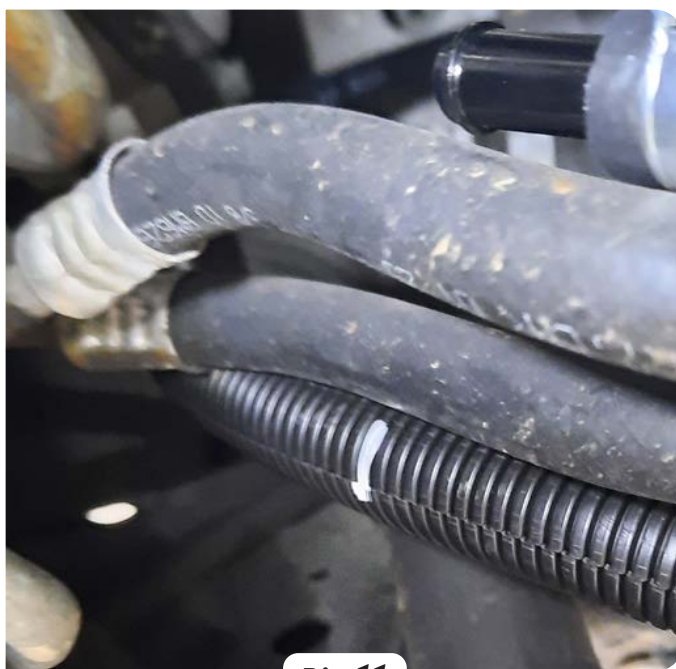


**Pic 9**

9. Mark where to cut the new cooler lines to align with the middle of the existing rubber lines. Cut both lines, existing and new, and fit joining barbs and hose clamps. Tighten as required. **(Pic 10 & 11)**



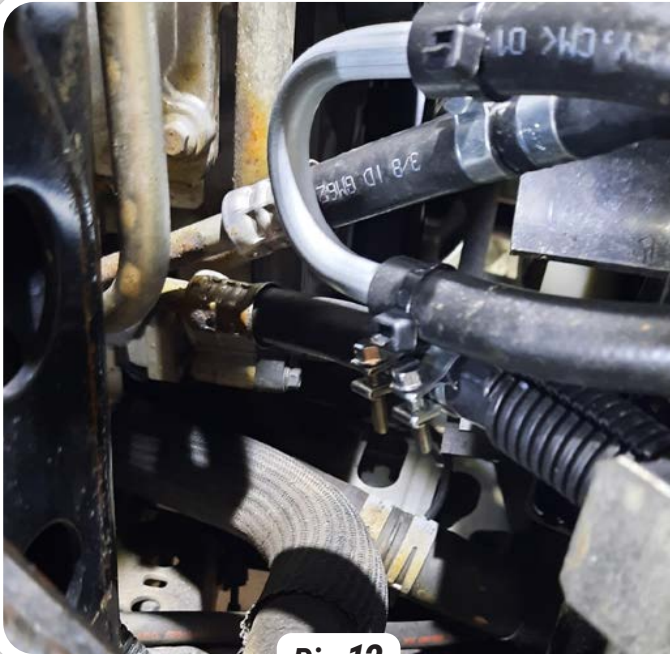
**Pic 10**



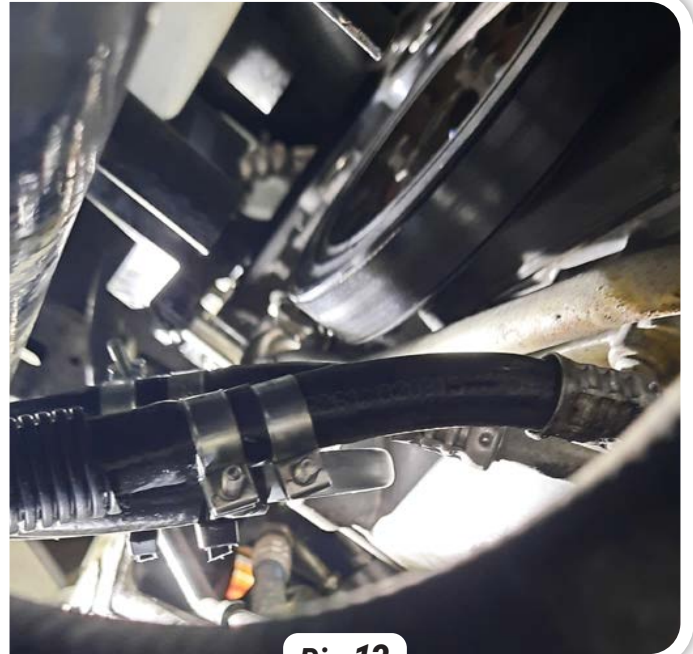
**Pic 11**



- 10.** Drain the excess fluid from the oil cooler that runs through the radiator. Fit the supplied 3/8 steel loop pipe to the existing lines. Apply cable ties to seal the fit. **(Pic 12 & 13)**



**Pic 12**



**Pic 13**

- 11.** Run the vehicle. Check for any leaks. Top up the transmission fluid as per manufacturers' specifications.