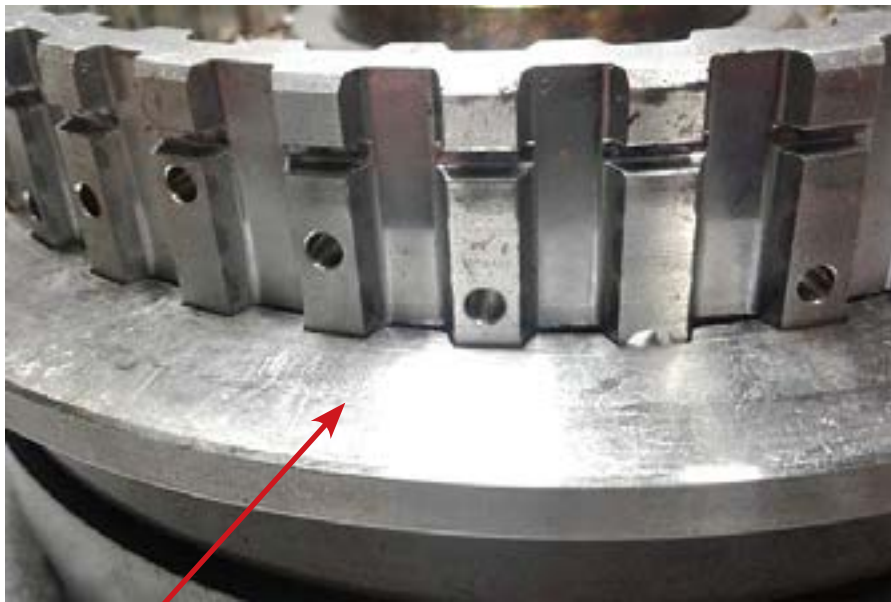




## Fitting Instructions

- 1.** Remove OE 3-5-R clutch pack.
- 2.** Discard broken OE waved plate.
- 3.** Discard OE steel plated (bottom one) this is replaced by the drum saver.
- 4.** Install new wave plate on top of piston (part of Drum saver kit).



- 5.** Install cupped housing on top of wave plate lip facing down.
- 6.** Install your frictions and steels as normal. Less bottom plate discarded in step 3.

Check Clearance refer to OE specs.  
Approximately 0.5mm to 1.5mm