

Line-to-Lube Pressure Regulator Valve

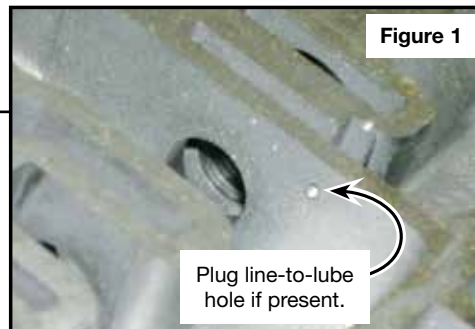
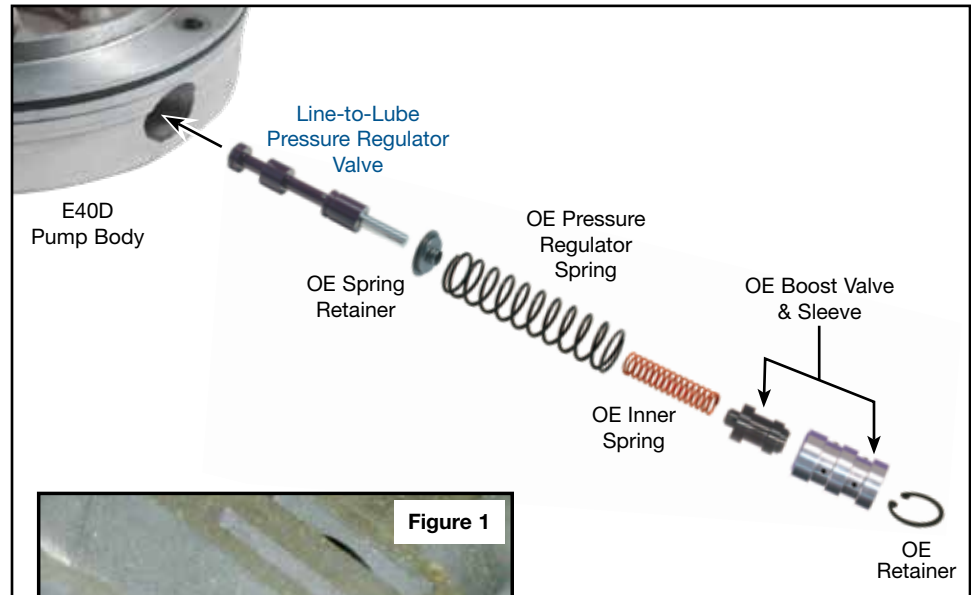
Part No.

36424-04K

Patent No. 6,826,908

NOTE: Fits Ford E4OD and 4R100 with F1, F5, F8 and E9 stamped pump castings.

Ford E4OD, 4R100



NOTE: If a line-to-lube orifice has been drilled into the pump casting wall, it must be plugged (**Figure 1**).

1. Disassembly

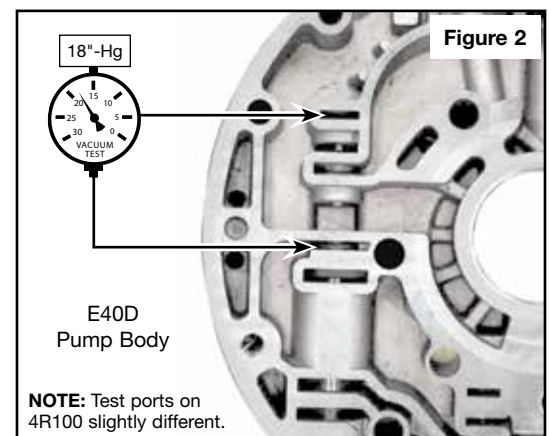
- a. Remove OE boost and pressure regulator valve train.
- b. Discard OE pressure regulator valve, save all other OE parts for reuse.

2. Installation & Assembly

- a. Place OE spring retainer on Sonnax valve (as shown) and install into bore.
- b. Reinstall OE inner and pressure regulator springs.
- c. Reinstall OE boost valve and sleeve.
- d. Reinstall OE retainer clip.

3. Final Testing

Vacuum testing at the port(s) indicated holds the recommended minimum 18 in-Hg.



NOTE: Test ports on 4R100 slightly different.